

Balsa (8mm)



Material: Balsa (8mm)

Thickness: 8mm

Speed: 30mm/s

Number of passes: 8 (1mm step)

Cardboard 1,4 mm



Material: Cardboard

Thickness: 1,4mm (3 layers)

Speed: 20mm/s

Number of passes: 2 (0,5mm step)

Cardboard 5 mm



Material: Cardboard

Thickness: 5mm (5 layers)

Speed: 10mm/s

Number of passes: 4 (1,25mm step)

Cardboard



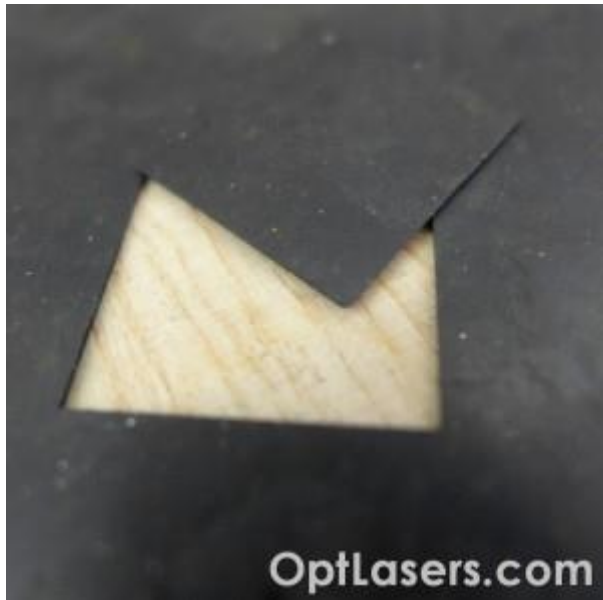
Material: Cardboard

Thickness: 0,5mm

Speed: 9mm/s

Number of passes: 1

Rubber



Material: Rubber

Thickness: 0,5mm

Speed: 15mm/s

Number of passes: 2 (0,25mm step)

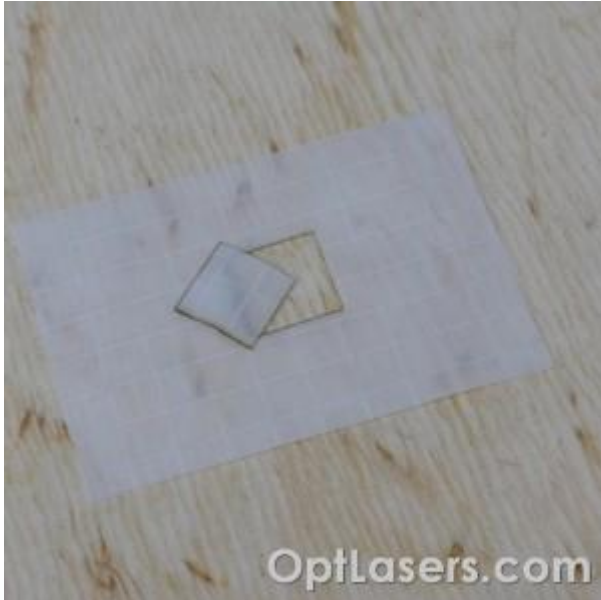
Oilcloth



Material: Oilcloth

Thickness: 0,4mm
Speed: 16mm/s
Number of passes: 1

Plastic foil



Material: Plastic foil
Thickness: 0,2mm
Speed: 8mm/s
Number of passes: 1

Green ortalion



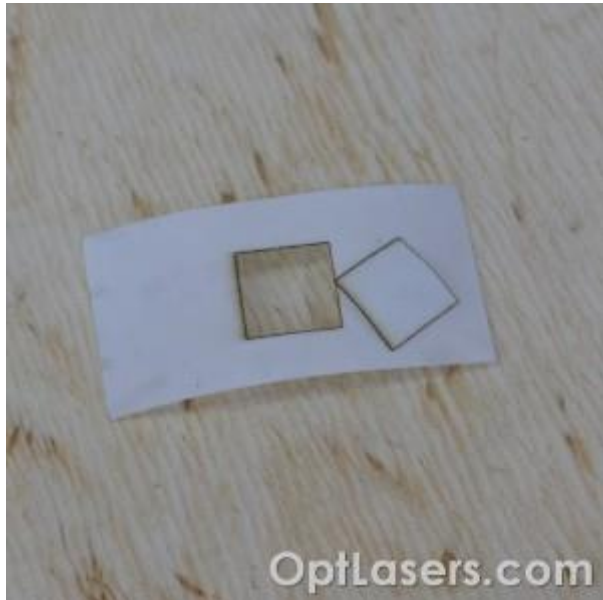
Material: Green ortalion

Thickness: 0,1mm

Speed: 50mm/s

Number of passes: 1

White (matt) plastic



Material: White (matt) plastic

Thickness: 0,3mm

Speed: 10mm/s

Number of passes: 1

Glass fiber reinforced foil



Material: Glass fiber reinforced foil
Thickness: 0,2mm
Speed: 4mm/s
Number of passes: 1

Glass fiber reinforced foil (dark, transparent)



Material: Glass fiber reinforced foil (dark, transparent)
Thickness: 0,3mm
Speed: 3mm/s
Number of passes: 1

Balsa (1mm)



Material: Balsa (1mm)

Thickness: 1mm

Speed: 30mm/s

Number of passes: 1

Balsa (4mm)



Material: Balsa (4mm)

Thickness: 4mm

Speed: 30mm/s

Number of passes: 4 (1mm step)

Real leather



Material: Real leather

Thickness: 1,7mm

Speed: 5mm/s

Number of passes: 2 (1mm step)

Lead foil



Material: Lead foil

Thickness: 0,05mm

Speed: 3mm/s

Number of passes: 1

Tablecloth



Material: Tablecloth

Thickness: 0,25mm

Speed: 10mm/s

Number of passes: 1

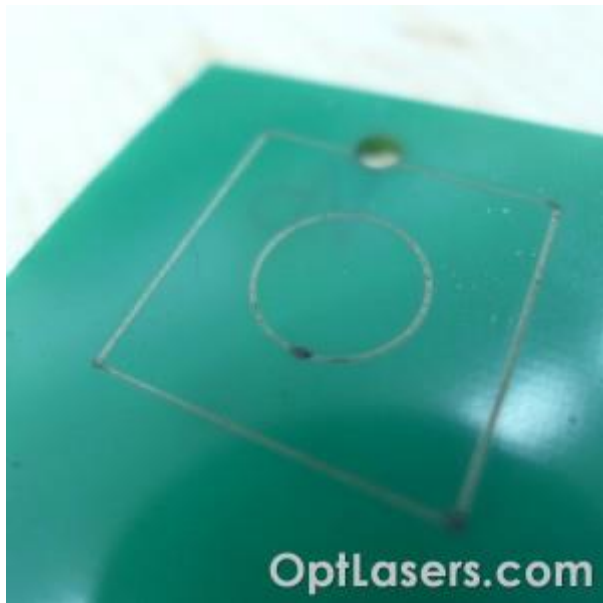
Laminate (yellow)



Material: Laminate (yellow)

Speed: 30mm/s

Engraving - Laminate (green)



Material: Laminate (green)

Speed: 30mm/s

Engraving - Wood



Material: Wood

Speed: 40mm/s

Engraving - Plywood



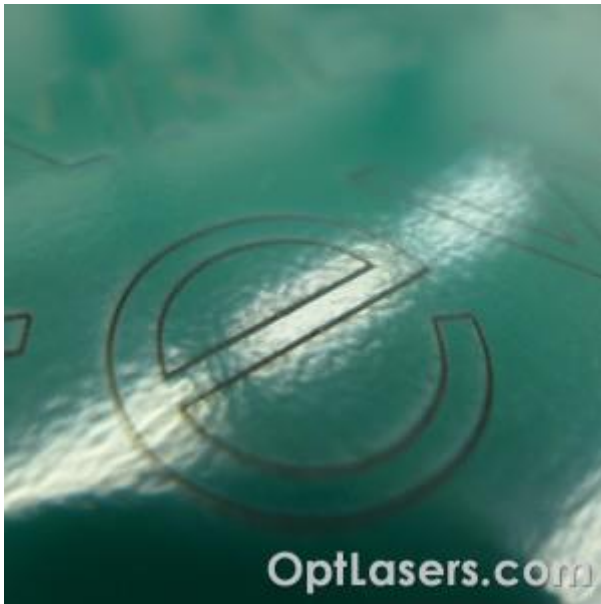
Material: Plywood
Speed: 40mm/s

Engraving - Painted metal (Powdered)



Material: Painted metal (Powdered)
Speed: 15mm/s

Engraving - Painted metal (Powdered)



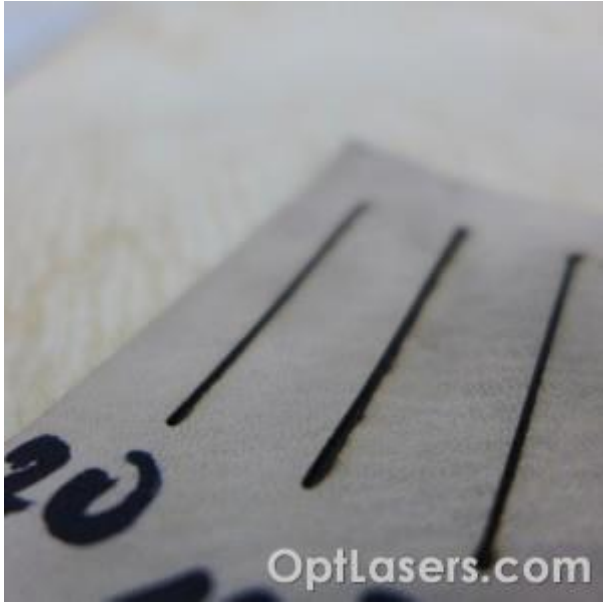
Material: Painted metal (Powdered)
Speed: 15mm/s

Plywood



Material: Plywood
Thickness: 1,08mm
Speed: 4mm/s
Number of passes:
3 (0,5mm step)

Engraving - Leather



Material: Leather

Speed: 15mm/s (depends on mark visibility)